

Police Sector Council **Portal Site Map**

PSC and IBM Confidential

.....
CLIENT:
PSC – Geoff Grunson

.....
IBM CONTACTS:
Nick Serediak
Karen Yarmol-Franko
Martine Martel

.....
DATE:
June 15, 2009

.....
VERSION:
v 1.0

The purpose of the site map is to show:

- > Where a page (or content) 'lives' on a site;
- > The main navigation (and some sub-navigation) of the site;
- > The hierarchy of the site; its structure, relationships and logical content groupings
- > The label names for the pages and navigational elements;

As well, a site map provides:

- > An indication of the amount of content that will be required;
- > An overview of the scope of the site (and therefore the project)
- > Input to help refine the estimates of effort required to design, build, test and deploy the site

A site map does not:

- > Show all navigation routes
- > Show final design
- > Reflect content details

Dependencies:

Site maps and wireframes are interlinked. Changes to one document will often result in changes to the other document, particularly with regard to the names of pages and process flow.

Components for approval:

- > Nomenclature
- > Page elements

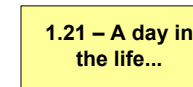
SITE MAP LEGEND:



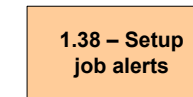
Homepage: Top page of the website



Primary homepage item: major call to action from homepage linking to its own content



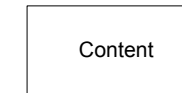
2nd Level page content: call to action from secondary page, linking to its own content



3rd Level Page content



Special Content



Quick link or ubiquitous navigation element

Information Architecture decisions:

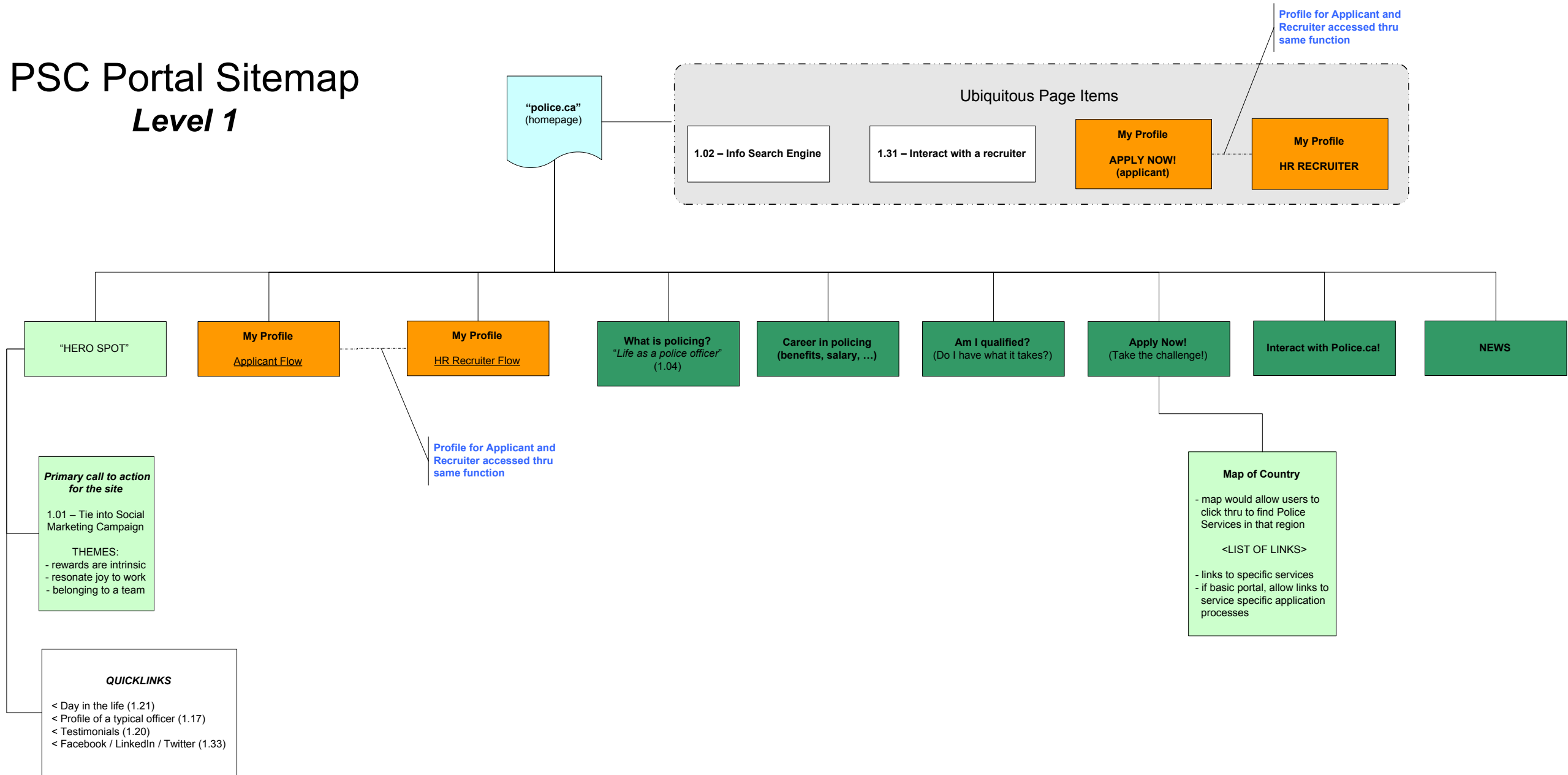
The following information architecture recommendations are based on requirement prioritization, workshop discussion facilitated during card sort exercise, and leading portal practices.

- Social marketing campaign must be highlighted as primary call to action – HERO SPOT
- Associated, prioritized content items must be highlight and easily accessible as quick links from homepage:
 - Day in the life (1.21)
 - Profile of a typical officer (1.17)
 - Testimonials (1.20)
 - Facebook / LinkedIn / Twitter linkage (1.33)
- Ubiquitous tertiary navigation links must include:
 - Search engine (1.02)
 - Interactinng with a recruiter (1.31)
 - Profile login, as an applicant or HR recruiter
- “MY PROFILE” should equate / correspond to “APPLY NOW” task from labeling and creative perspectives
- Information architecture is scalable such that full eRecruitment integration can be completed if Option 3 is selected immediately or if a migration path in the future is required

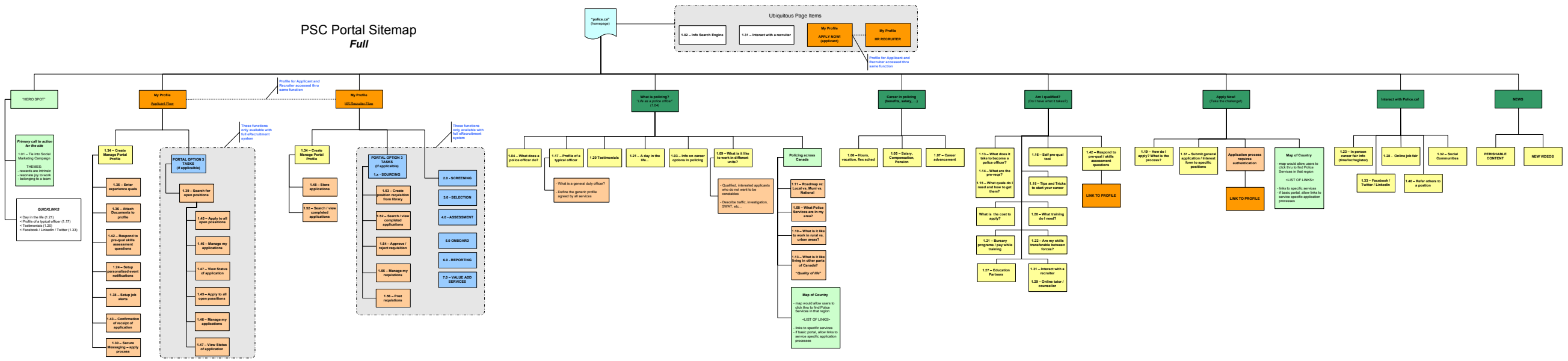
- Secondary navigation path using geographical references should be made available within “What is policing” and “Apply now” flows. This will allow users to learn more about police services in their local geographies or within areas of the country that interest them. This will also facilitate additional targeted marketing opportunities (eg. 1.11 – Roadmap: Local vs. municipal vs. national, 1.13 – What is it like living in other parts of Canada), etc...
- Integrated linkage between pre-qualification tests or application process and portal profile must be included. For example, an applicant can find the pre-qualification assessment (requirement number 1.42) within the “Am I qualified?” section of the portal. This will require the applicant to authenticate themselves against the portal (if they haven’t already) and complete the task. This same task can also be accessed from within the “MY PROFILE” section of the site

PSC Portal Sitemap

Level 1

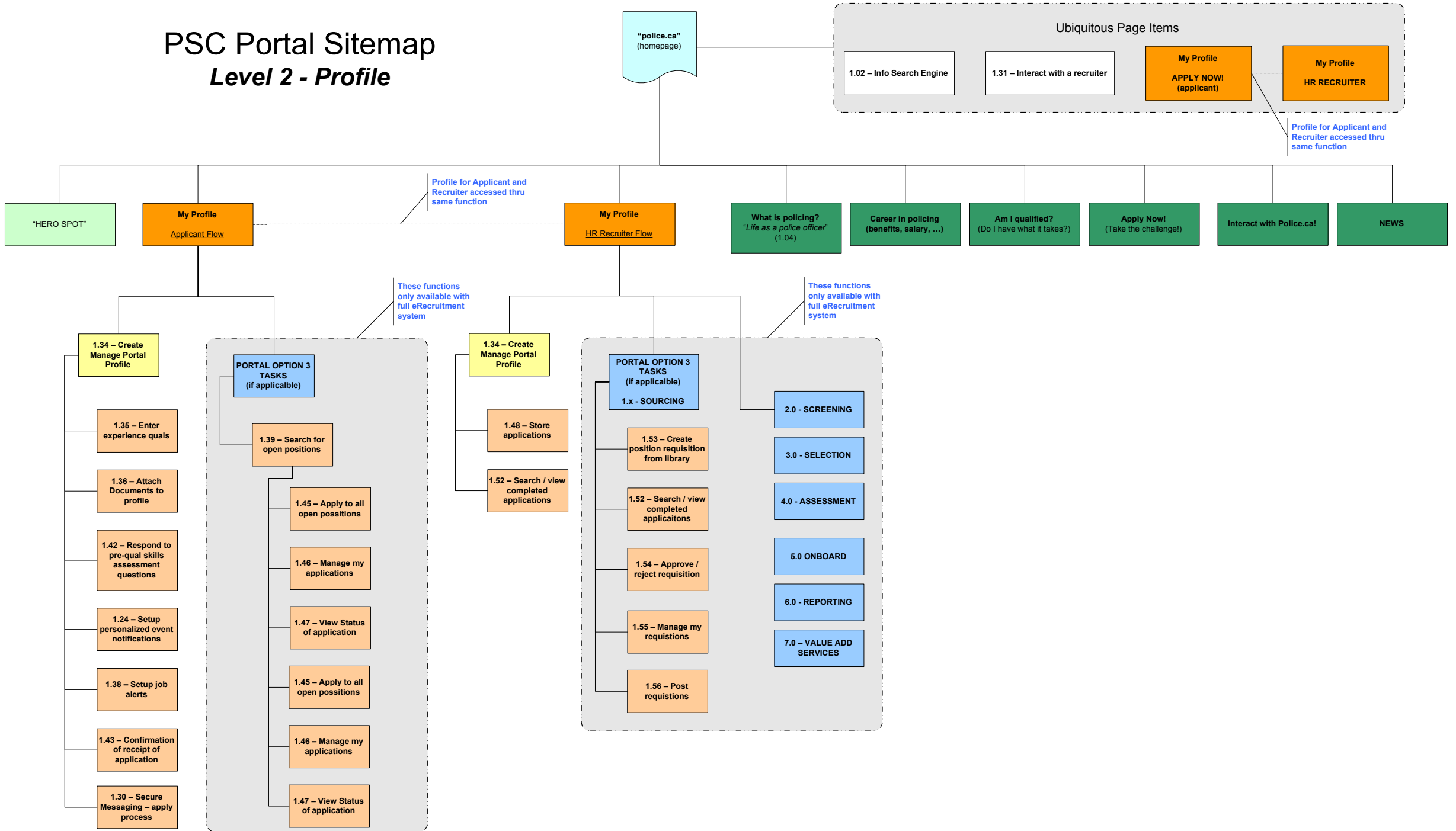


PSC Portal Sitemap Full



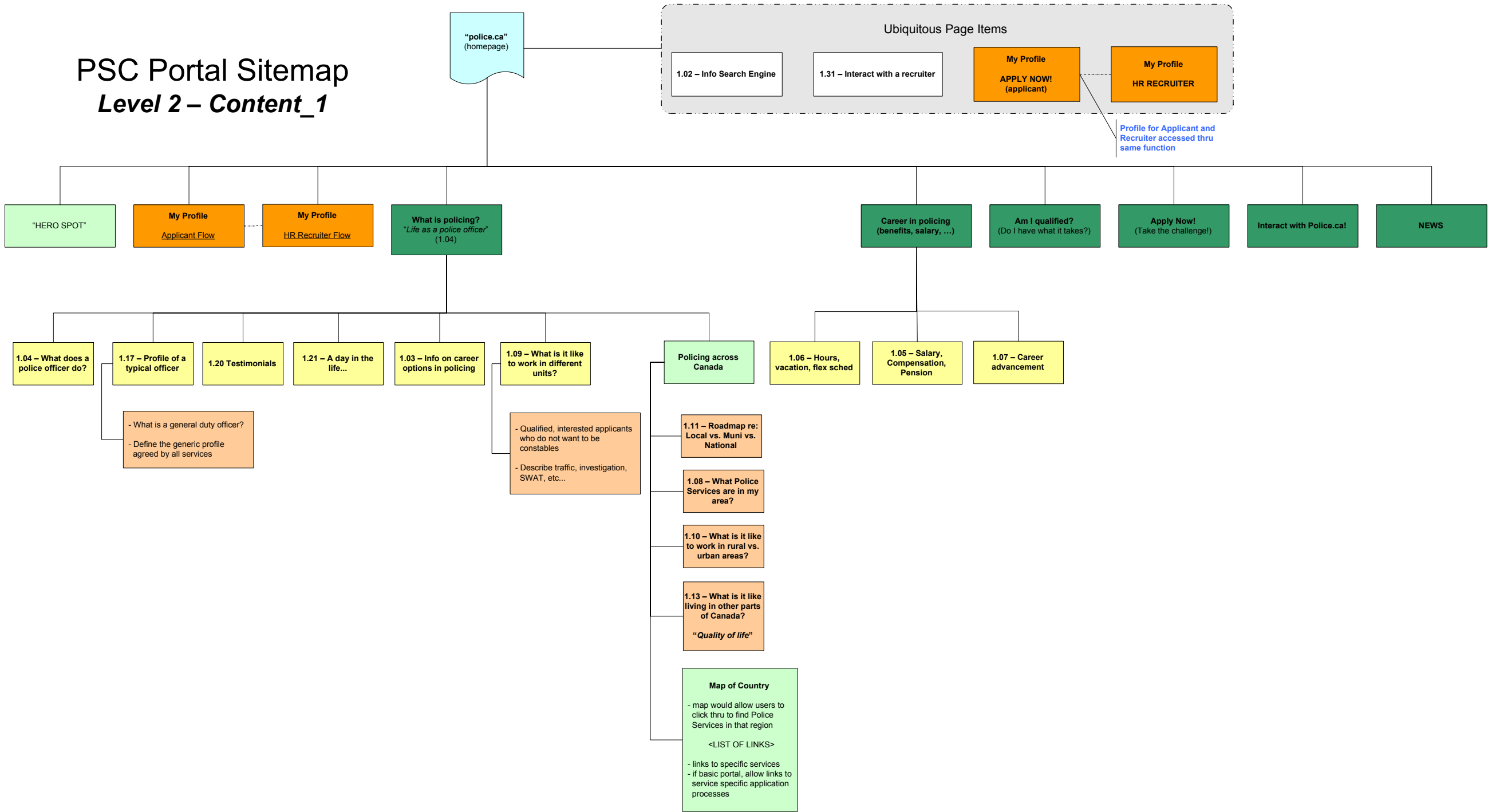
PSC Portal Sitemap

Level 2 - Profile



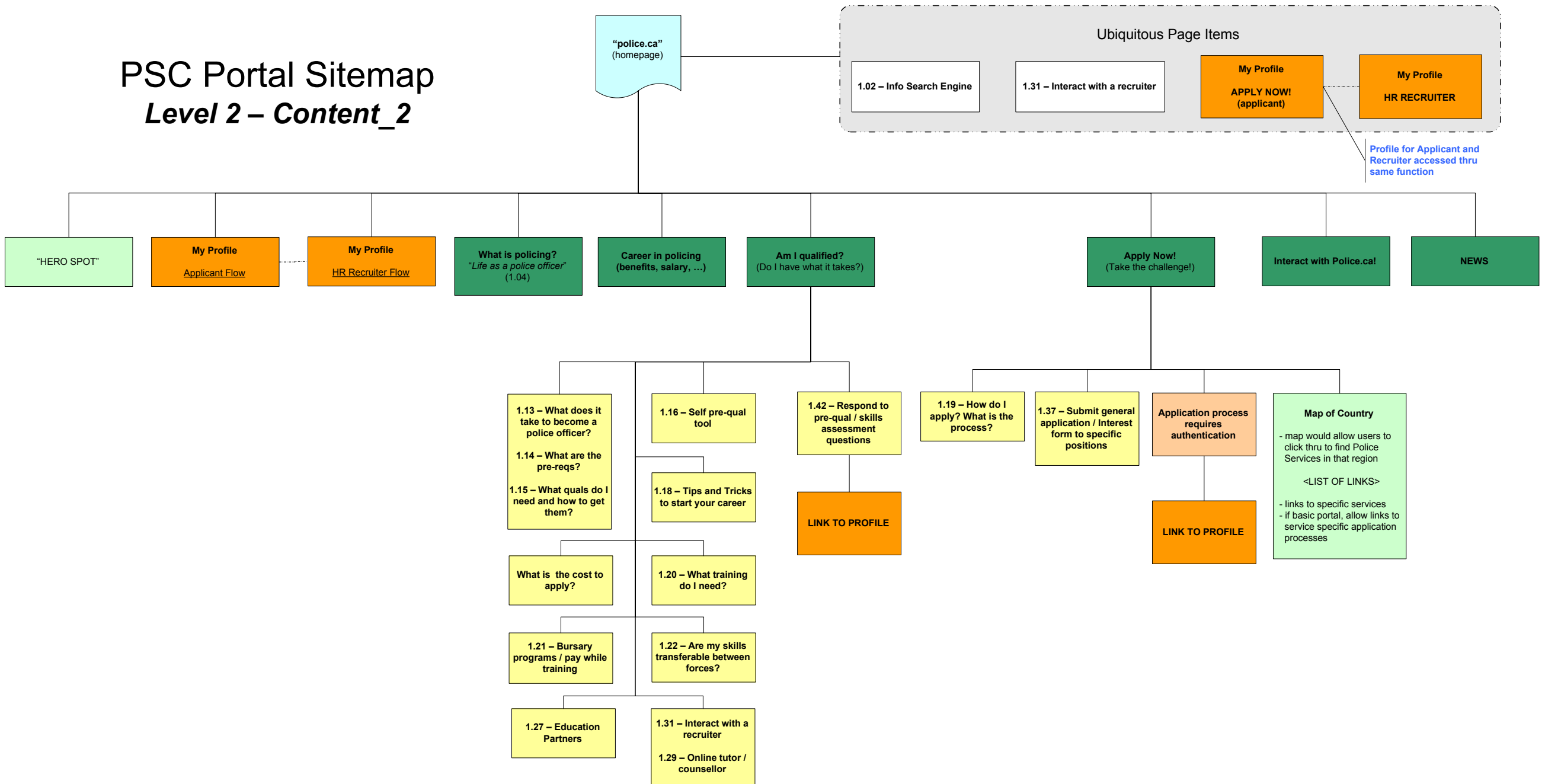
PSC Portal Sitemap

Level 2 – Content_1



PSC Portal Sitemap

Level 2 – Content_2



PSC Portal Sitemap

Level 2 – Content_3

